



COMMANDER SERIES SIX BURNER HEAVY-DUTY GAS RANGE



Model FS-6J-27



Design Certified by the American Gas Association
Design Certified by the Canadian Gas Association
Listed by the National Sanitation Foundation

Approved by _____

Date: _____

**SPECIFY TYPE OF GAS AND FINISH WHEN ORDERING.
SPECIFY ALTITUDE WHEN ABOVE 2,000 FT.**

BASIC MODEL:

FS-6J-27 36" wide six burner heavy-duty gas range

KEY FEATURES:

- Stainless steel front, sides, bullnose, stub back and 6" adjustable legs. Sides finished in black epoxy powder coat paint.
- 1 1/4" diameter front gas manifold.
- Six 30,000 BTU/hr. two piece burners. Individual pilot for each burner.
- Three heavy-duty cast iron top grates measure 12"w x 27"d.
- Oven controls located in the cool zone.
- Oven interior measures 27 1/2"w x 28 1/2"d x 14 1/2"h. Porcelain enamel on steel oven hearth, rear panel and door liner. One oven rack and four rack positions. 40,000 BTU/hr. burner with pilot ignition. Thermostat adjusts from 250° to 500°F.
- Oven door counterbalanced with weights.
- One year limited parts and labor warranty.

OPTIONAL FEATURES:

- Elevated rear (4" step-up) burners.
- 30,000 BTU/hr. Snorkler convection oven in place of standard oven. Porcelain enamel on steel interior measures 26 1/4"w x 23"d x 14"h. Two oven racks and 4 rack positions. Thermostat adjusts from 200° to 500°F. 1/4 H.P. blower motor with 6 foot power cord and plug. 115/60/1, 4 amps.
- Cabinet storage base in place of oven. Specify model no. FS-6J-0-36.
- Stainless steel doors on cabinet base.
- Stainless steel finishing back.
- Common stainless steel bullnose up to 120" wide. (Provide a drawing showing the position of each piece of equipment in the line-up with the order.)
- Cap and cover manifold end(s). (No charge.)
- Leveling bolts in place of legs for curb installation.
- Set of four 5" diameter casters, two locking.
- Stainless steel dolly frame with casters, up to 96" wide.
- Rear gas connection. (Specify 3/4" or 1 1/4".)

DESCRIPTION:

Heavy-duty six burner gas range with oven, Wolf Model No. FS-6J-27. Stainless steel front, sides, bullnose, stub back and 6" adjustable legs. 1 1/4" diameter front gas manifold. Six 30,000 BTU/hr. two piece burners. Individual pilot for each burner. Three heavy-duty cast iron top grates measure 12"w x 27"d. Oven interior measures 27 1/2"w x 28 1/2"d x 14 1/2"h. Porcelain enamel on steel oven hearth, rear panel and door liner. One oven rack and four rack positions. 40,000 BTU/hr. burner with pilot ignition. Thermostat adjusts from 250° to 500°F. Oven controls located in the cool zone. Oven door counterbalanced with weights. Total input 220,000 BTU/hr.

Exterior dimensions: 36"w x 38"d x 36" working height on 6" adjustable legs.

WOLF RANGE COMPANY

Wolf Range Company
Division of ITW Food Equipment Group LLC
(800) 366-9653
www.wolfrange.com



Commander Series Six Burner Heavy-Duty Gas Range

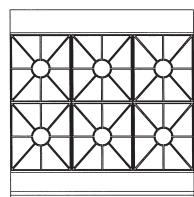
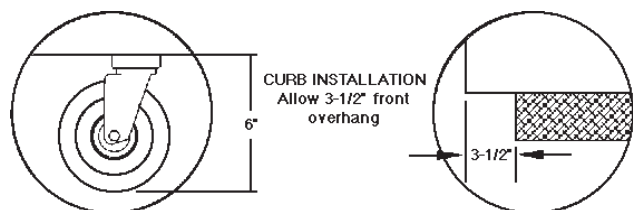
ACCESSORIES:

- 26½" or 37¾" high stainless steel back riser. (Common back risers available up to 96" wide.)
- 26½" high single deck high shelf. (Common hi-shelves available up to 96" wide.)
- 26½" high single deck flo-thru high shelf. (Common hi-shelves available up to 96" wide.)
- 37¾" high double deck high shelf. (Common hi-shelves available up to 96" wide.)
- Additional oven rack(s).
- Gas pressure regulator (specify size and type of gas).
- Flexible gas hose with quick disconnect and restraining device. Consult price book for available sizes.

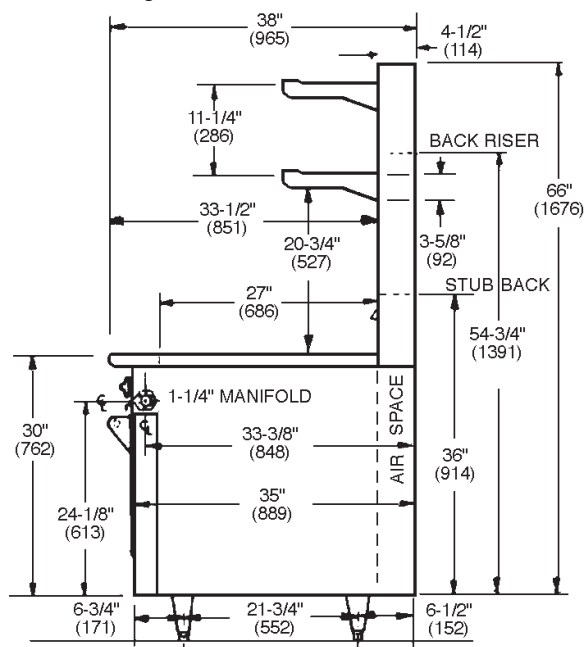
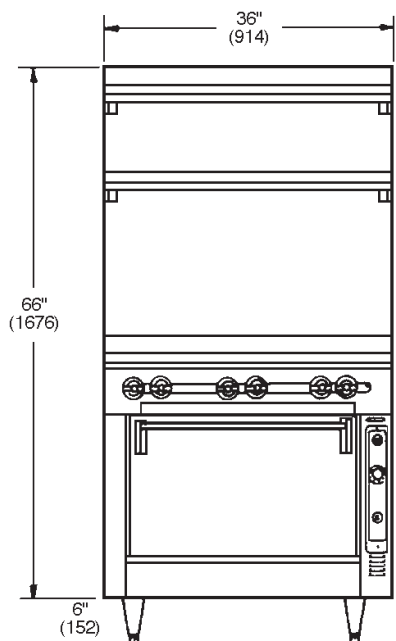
INSTALLATION REQUIREMENTS:

1. In order for this equipment to operate as designed, an adequate gas supply (volume and pressure) must be delivered to the installation. Natural gas 5.0" W.C., propane gas 10.0" W.C.
2. A properly sized gas pressure regulator must be installed with this equipment.
3. An adequate ventilation system is required for commercial cooking equipment. Information may be obtained by writing to the National Fire Protection Association, 1 Batterymarch Park, Quincy, MA 02269, www.NFPA.org. When writing, refer to NFPA No. 96.
4. These units are manufactured for installation in accordance with ANSZ223.1A (latest edition), National Fuel Gas Code. Copies may be obtained from The American Gas Association, 400 N Capitol St. NW, Washington, DC 20001, www.AGA.org.
5. Clearances:

	St. Oven		Conv. Oven	
	Combustible	Non-Combustible	Combustible	Non-Combustible
Rear	2"	0"	2"	2"
Sides	20"	2"	2"	2"
6. For proper combustion, install equipment on adjustable legs or casters. On curb or platform, allow 3½" front overhang (see diagram). Leveling bolts are required for curb installation. Specify when ordering.



FS-6J-27



MODEL NO.	GAS RATED INPUT BTU/HR.			WIDTH	DEPTH	WORKING HEIGHT	APPROX. SHP. WT. (LBS./KG)
	TOP	OVEN	TOTAL				
FS-6J-27	180,000	40,000	220,000	36"	38"	36"	690/311
KFS-6J-27	180,000	30,000	210,000				730/329
FS-6J-0-36	180,000	—	180,000				435/196

NOTE: In line with its policy to continually improve its product, Wolf Range Company reserves the right to change materials and specifications without notice.
This appliance is manufactured for commercial use only and is not intended for home use.